

Smartdop 30EX

**BI-DIRECTIONAL DOPPLER for ABI/ TBI studies
with built-in Pulse Volume capability**



- **DOPPLER BLOOD PRESSURE RECORDER**
Performs ABI/TBI/Segmental exams with automated cuff inflator/deflator.
- **BI-DIRECTIONAL DOPPLER WITH BACKLIT LCD**
Displays velocity waveforms in bi-directional & dual separation channel and numerical data.
- **Two probe connectors for 4, 5, 8, 10MHz, PPG probes and PV**
Combination of Doppler and PPG for ABI & TBI, built-in pulse volume with automatic cuff inflator.
- **Easy Operation with AUTO-INF and AUTO-STORE menu for ABI/ TBI test**
- **USB COMPUTER INTERFACE**
Transfers waveforms and numerical data to PC with optional Windows Software, Smart-V-Link

CLINICAL APPLICATIONS

- Detections of arterial and venous blood flow velocity and pressures for vascular disease
- ABI and TBI studies
- Bi-directional lower extremity studies
- PEAK & MEAN blood velocity determinations
- Peripheral vascular procedures
- Blood pressure segmental studies Venous compressions
- Toe pressure & venous reflux studies (PPG)

PROBES

Standard (Clinic):

4, 5, 8, and 10 MHz

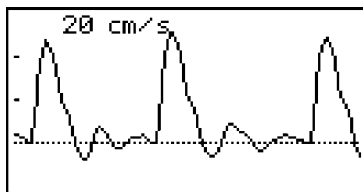


Optional probes:

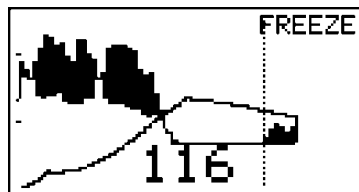
- PPG Probe
- Flat type
- Pencil type



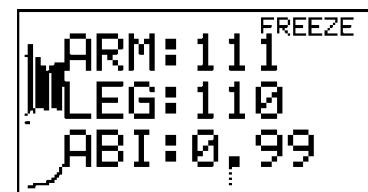
DISPLAY SAMPLE



Velocity waveform



Blood pressure



ABI testing

ACCESSORIES

- AC adaptor
- Cuff 12cm
- Tubing
- Ultrasonic gel

OPTIONS

Windows software:

- Smart-V-Link

Toe Cuff:

- 1.9cm/ 2.5cm

SPECIFICATIONS

Power Supply: Ni-MH rechargeable battery

Full charge life: Approx 7 hours

Battery life: Approx 2 years

Speaker output: 250mW or more

Dimensions: 252(W) x 192 (L) x 91 (H) mm

Weight: Approx 1.2 kg (Excluding probe)

Operating environment: 10 to 37°C

External Outputs: Headset connector

USB port for PC connections

Electrical safety: Conforms to IEC60601-1

**Specifications are subject to change*



Hadeco, Inc.

2-7-11, Arima, Miyamae-ku, Kawasaki, Kanagawa
216-0003, Japan
TEL: +81 44 877 4361 / FAX: +81 44 855 7301
<https://www.hadeco.jp>



080-00229-01